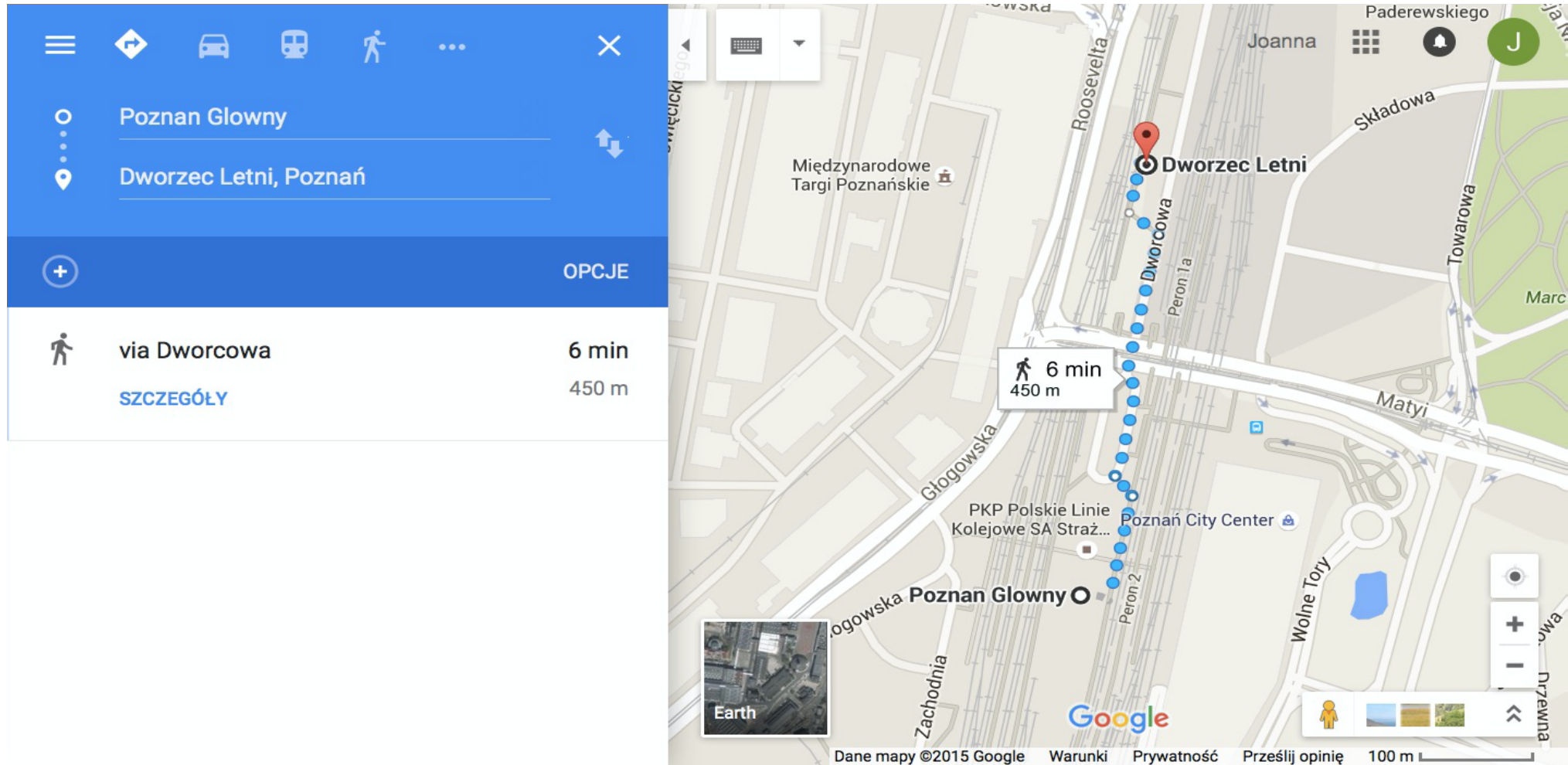


BUS "dworzec letni" from Poznan

The meeting point for the BUS is so-called Dworzec Letni located almost outside the railway station, [see](#). Look for a note "conference Bedlewo". Be careful because the railway station in Poznan has a non-intuitive structure and you can get lost quickly - follow the directions on the following maps.



Navigation menu with icons for home, car, train, pedestrian, and search.

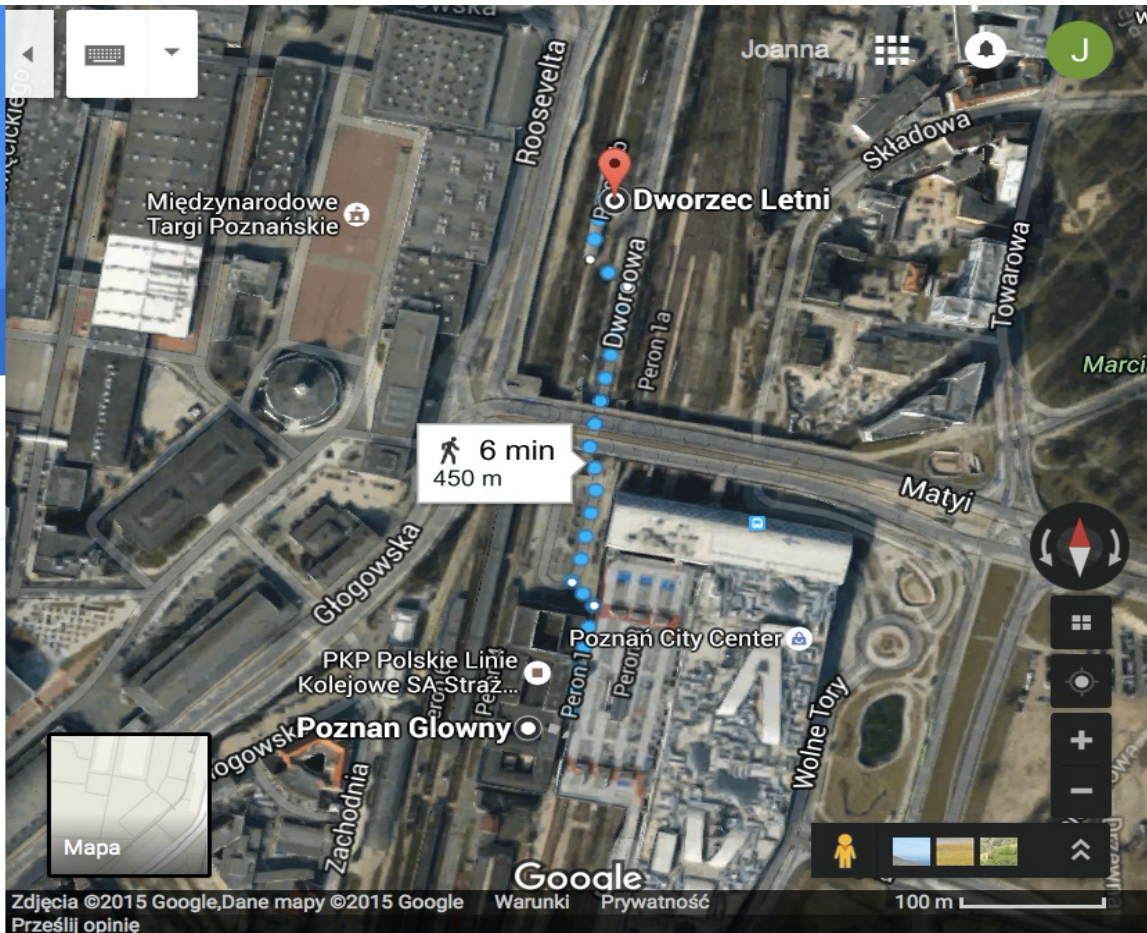
Poznan Główny

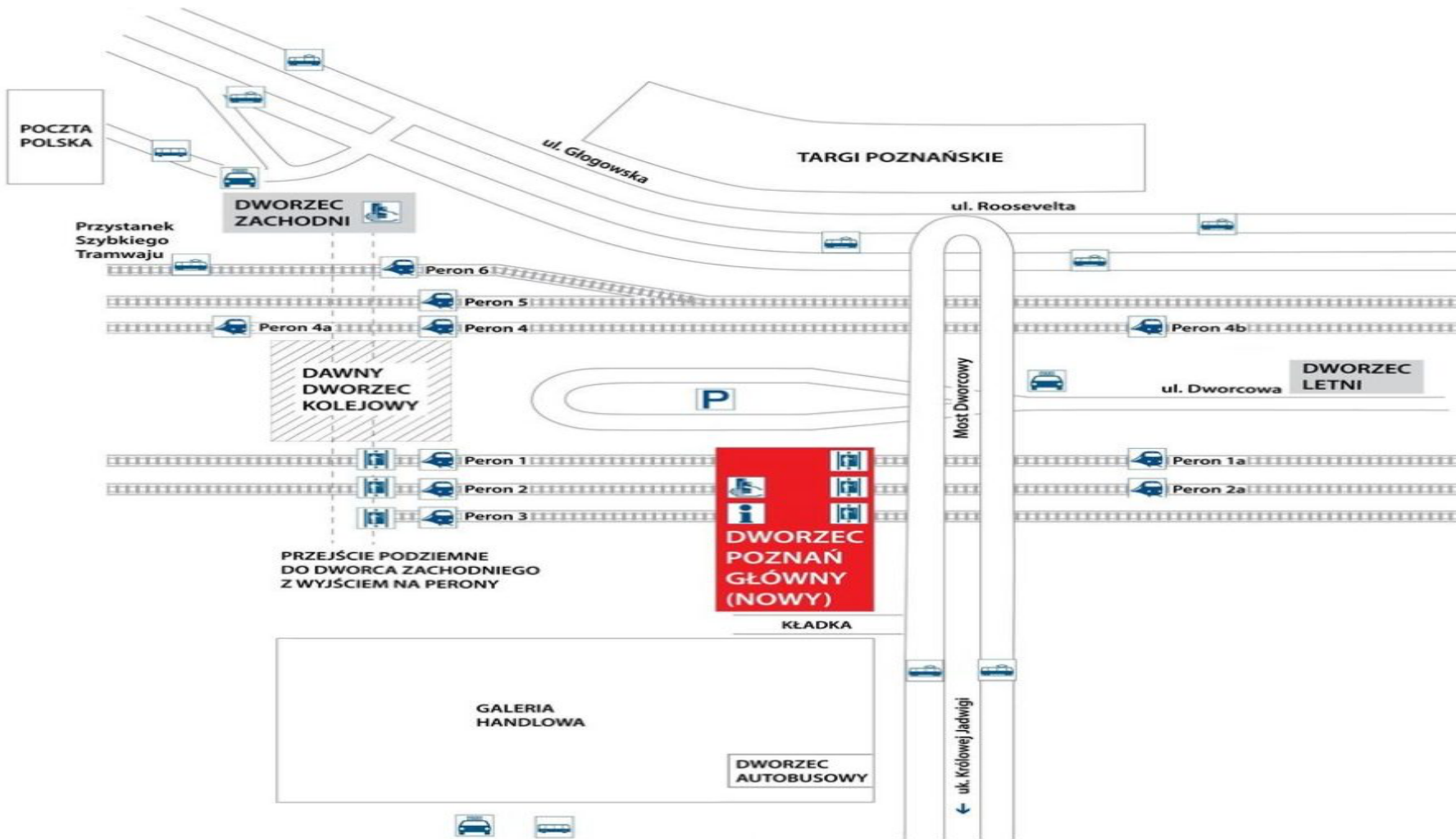
Dworzec Letni, Poznań

OPCJE

via Dworcowa 6 min 450 m

[SZCZEGÓŁY](#)

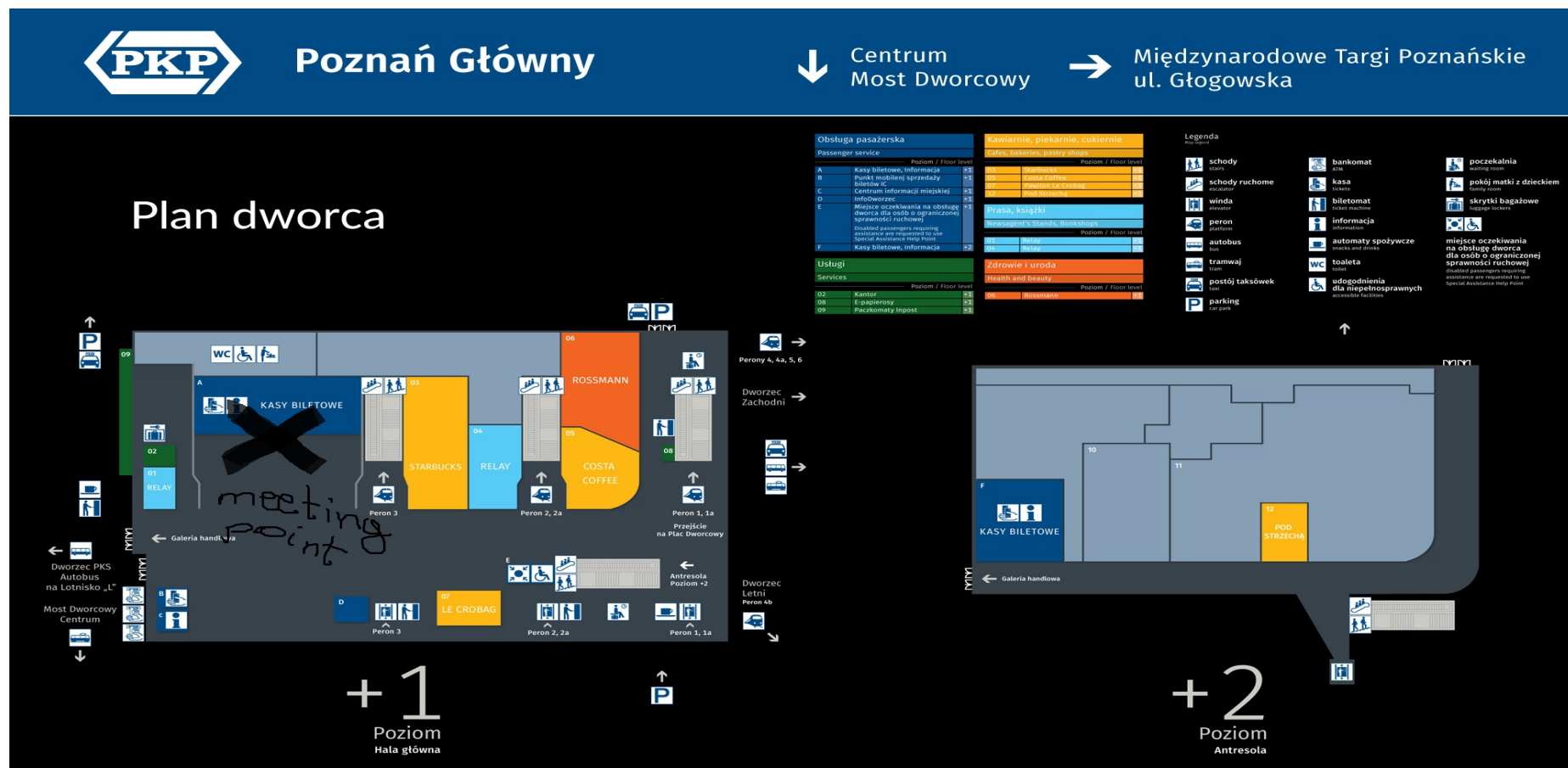




TAXI from train station Poznan

The meeting points for the TAXI:

- At the train station "Poznan Główny": from platform upstairs, in main hall next to cash desk number 1 (new building - IMPORTANT)



Bus or TAXI from the airport:

IN ARRIVAL HALL next to the currency exchange point.

<https://www.airport-poznan.com.pl/en/for-passengers/departure/airport-and-parking-plan>

Look for the driver holding a note "conference Bedlewo" or a note with your name.